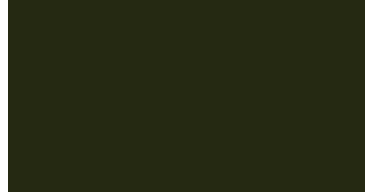


REGAL WHITE



BLACK



ANTIQUÉ



COLONIAL RED



DOVE GRAY



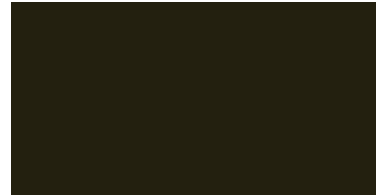
DARK BRONZE



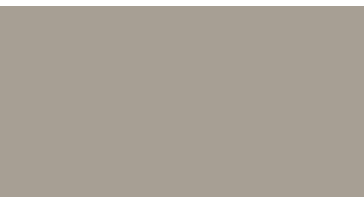
TERRA COTTA



SLATE GRAY



DARK BRONZE



ASH GRAY



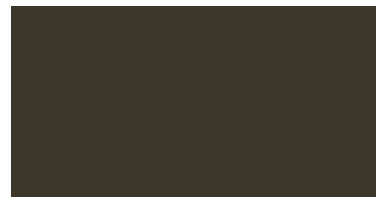
BLACK



DOVE GRAY



EVERGREEN



MEDIUM BRONZE



DARK GRAY



SANDSTONE



26-GAUGE COLORS



See our colors on your roof or wall with our Color Visualizer! Scan the QR code on the left or visit [qrco.de/bbxEie](http://qrco.de/bbxEie) to get started.

- STEP 1: Take a picture of your property.
- STEP 2: Upload your image.
- STEP 3: Find your perfect Sheffield Metals color!

\* Textured SMP product (all other colors are low-sheen PVDF)

Oil canning is an aesthetic issue and is an inherent part of light gauge cold formed metal products. By using coil that has been processed properly, designing for thermal movement, following stringent specifications for installation and proper handling most oil canning can be minimized. Oil canning is not grounds for coil/panel rejection.

Crinkle Coat Colors have a chalk rating of 6 for horizontal installations and 8 for vertical installations (ASTM D-214) and a fade rating of 7.0 Hunter delta-E Units for horizontal installations and 5.0 Hunter delta-E Units for vertical installations (ASTM D2244).



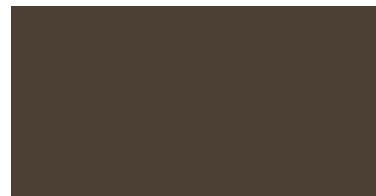
CHARCOAL GRAY



SIERRA TAN



EVERGREEN



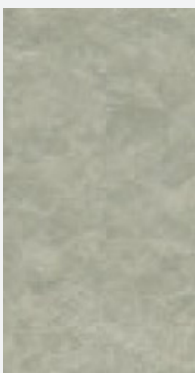
MANSARD BROWN



Sherwin-Williams® is a trademark of SWIMC LLC.

NON-PAINTED

CRINKLE COAT TEXTURED SMP COLORS



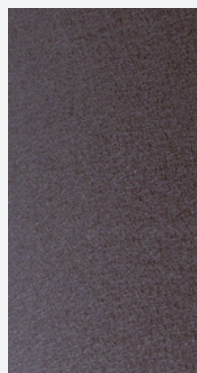
ACRYLIC-COATED GALVALUME®



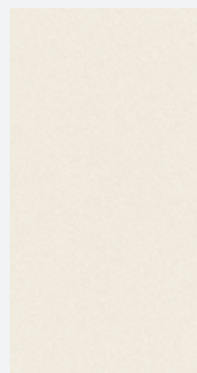
CRINKLE COAT BLACK \*



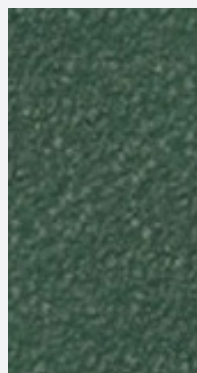
CRINKLE COAT CHARCOAL GRAY \*



CRINKLE COAT BURNISHED SLATE \*



CRINKLE COAT REGAL WHITE \*



CRINKLE COAT EVERGREEN \*

STOCK AVAILABILITY MATRIX	LEED V4.1	ISR	EMI	3 YR. SRI	SRI	27.5"	40.375"	48.375"
Acrylic-Coated Galvalume®	L	0.67	0.14	0.55	56	●	●	●
Crinkle Coat Black		0.29	0.85	0.26	27			
Crinkle Coat Burnished Slate		0.29	0.89	0.29	30			
Crinkle Coat Charcoal Gray	L	0.32	0.87	0.33	33			
Crinkle Coat Evergreen		0.30	0.88	0.30	31			
Crinkle Coat Regal White	L	0.68	0.90	N/A	83			
L/S Antique		0.28	0.85	0.27	27		●	●
L/S Ash Gray	L	0.49	0.87	N/A	56	●	●	●
L/S Black		0.28	0.85	0.27	27		●	●
L/S Charcoal Gray		0.30	0.87	N/A	31			
L/S Colonial Red		0.29	0.85	0.27	28	●	●	●
L/S Dark Bronze		0.26	0.85	0.25	24		●	●
L/S Dark Gray	L	0.32	0.86	0.33	33	●	●	●
L/S Dove Gray	L	0.49	0.87	N/A	56	●	●	●
L/S Evergreen		0.26	0.87	0.26	25		●	●
L/S Mansard Brown		0.27	0.87	N/A	27		●	●
L/S Medium Bronze	L	0.30	0.86	0.32	30	●	●	●
L/S Regal White	L	0.66	0.87	0.66	80	●	●	●
L/S Sandstone	L	0.60	0.87	N/A	71	●	●	●
L/S Sierra Tan		0.29	0.86	0.30	29	●	●	●
L/S Slate Gray	L	0.40	0.85	0.40	43	●	●	●
L/S Terra Cotta	L	0.37	0.88	0.36	40	●	●	●

### CERTIFIED LABORATORY TEST REPORT SUMMARY FOR GALVALUME

Accelerated Weathering ASTM G 23	Salt Spray ASTM B 117	Humidity ASTM D 2247	Formability ASTM G 522	Adhesion ASTM D 3359	Pencil Hardness ASTM D 3363	Specular Gloss ASTM D 523	Impact Resistance ASTM D 2794	Abrasion Resistance ASTM D 968	Tunnel Test ASTM 3 84	Acid Resistance ASTM D Procedure 72 (Independent of Substrate)
2,000 Hours	2,000 Hours Scribe: 7	2,000 Hours	1/8" Mandrel	No Loss of Adhesion	HB Minimum	85° = 5-15	3x Metal Thickness in Inch-lb.	Total Sand = 67 Liters (±10 Liters)	Class A Coating	20% Sulfuric Acid
Chalk #8	1/16" Blisters Field: 10	Rating: 10	No Cracking				No Loss of Adhesion			18 Hour — No Visible Change
Color: 2AE	No Blisters	No Blisters	No Loss of Adhesion							

### NOTES

- All of Sheffield's CoolR® metal is painted with a .20 mil primer and .70 - .90 mil Top Coat of 70% PVDF resin-based coating. The reverse side has a .20 primer and .30 - .40 backer coating.
- For low slope roofing to meet LEED V4.1 requirements, the initial SRI must be ≥ 82 OR the 3-year SRI must be ≥ 64. For steep slope roofing to meet LEED V4.1 requirements, the initial SRI for 75% of the roof must be ≥ 39 OR the 3-year SRI must be ≥ 32.
- Low slope is defined as ≤ 2:12. Steep slope is defined as > 2:12.
- Materials should be stored in a cool, dry place. Materials with PVC film on project sites should be used immediately or stored in a climate-controlled setting. PVC film must be removed prior to installation.
- Anything not noted in the Availability Matrix can be painted, regardless of width, substrate, or thickness; however, it would be subject to a minimum paint run and would not need to meet standard custom order criteria.**
- For items not stocked in 27.5", customers may be subject to purchasing a 20" drop coil.**

### KEY

- = Stocked Item
- L = LEED V4.1 Compliant
- ISR = Initial Solar Reflectance
- EM = Emissivity
- SRI = Solar Reflectance Index

Colors shown are matched as accurately as possible, but may vary slightly from the finished product. These rich and vibrant colors are produced with PVDF resins, which provide superior color retention and allow Sheffield Metals to offer non-prorated coating warranties for most applications. Touch-up should only be done with a Sheffield Metals color-matched PVDF air-dry paint pen.

Galvalume® is a registered trademark of BIEC International Inc. Coating warranty varies for CoolR® Copper and Pre-Weathered Galvalume. Please contact your representative for more information.